



ARCHAEOLOGY & HISTORIC RESOURCE SERVICES

## GOWANUS CANAL SUPERFUND SITE

### SERVICES:

- *Identification and Historical Assessment of Targets 37a, 37b, 37c, & 39 Located in the 6<sup>th</sup> Street Basin; and Targets 31, 31a, and 31b Located in Turning Basin 4 of Gowanus Canal*

### AGENCIES:

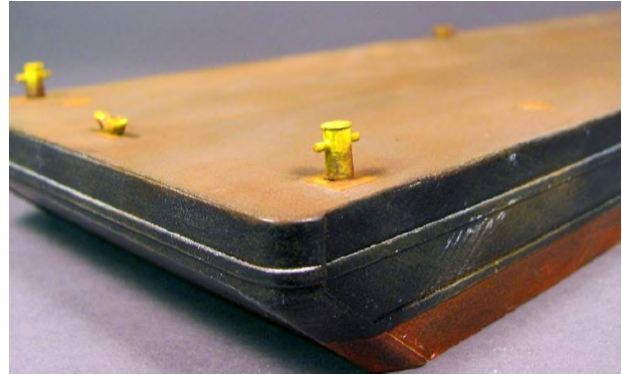
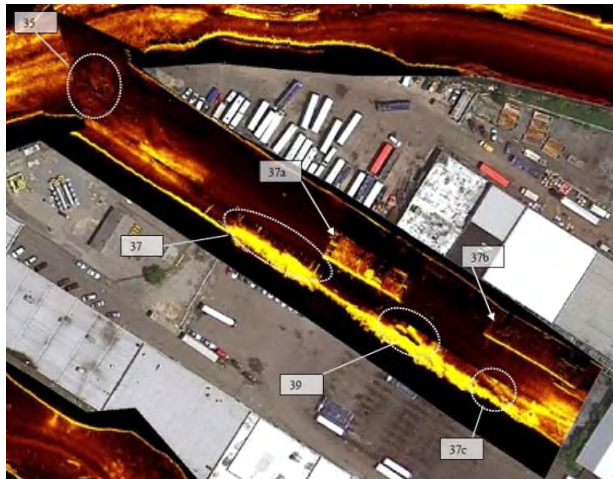
- *US Environmental Protection Agency*
- *NY State Office of Parks Recreation and Historic Preservation*

### LOCATION:

*Brooklyn, NY*

### CLIENT:

*Geosyntec Consultants*



### **Project Summary**

Geosyntec retained AHR S to identify and assess the potential historical and cultural significance of a number of undocumented objects in the Gowanus Canal, an EPA Superfund site. The targets were not accessible to divers due to polluted waters.

### **Scope of Work**

An AHR S expert in naval architecture and maritime history focused research on recent photographs of the wrecks and site. A methodology for further research was then determined.

### **Outcome**

Subject matter expertise and available online resources facilitated the conclusive identification of a WWII-era Aircraft Rescue Boat and two large barges, as well as a general operational history of these vessels. Smaller targets included a small boat and assorted bulkhead debris. None of the targets were determined to be historically significant under Section 106 of the National Historic Preservation Act of 1966.